



CRDi Injectors Coding



Please note that Delphi injectors are not currently supported (Hyundai Teracan 29c CRDi & Kia Carnival 29c CRDi). Support for Delphi system will be released as future free update.

Older common-rail diesel vehicles with EDC15C7 ECU do not require injectors calibration coding.

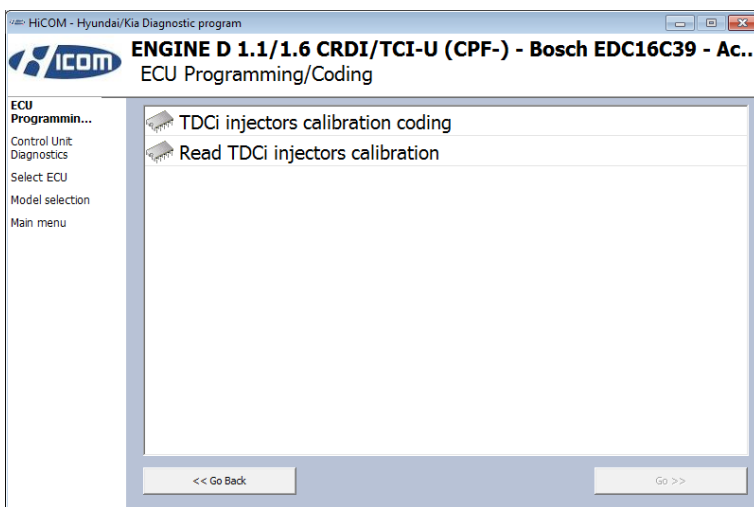
Table of Contents

1 Bosch EDC16C39 & EDC17 Injector coding	2
--	---

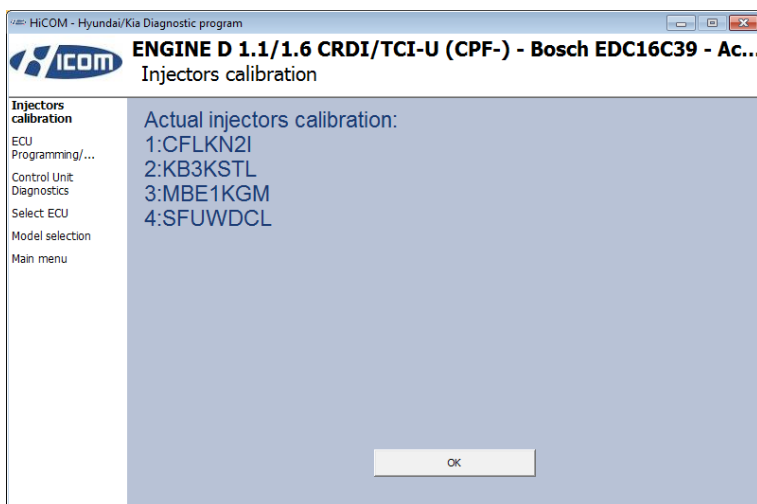
1 Bosch EDC16C39 & EDC17 Injector coding

Each injector has calibration number, which is lasered to the top side of the injector.

The calibration number consists of 7 numbers or letters (e.g. "CFLKN2I").



Injector coding functions are available from "Coding" menu after connecting to diesel engine control unit.

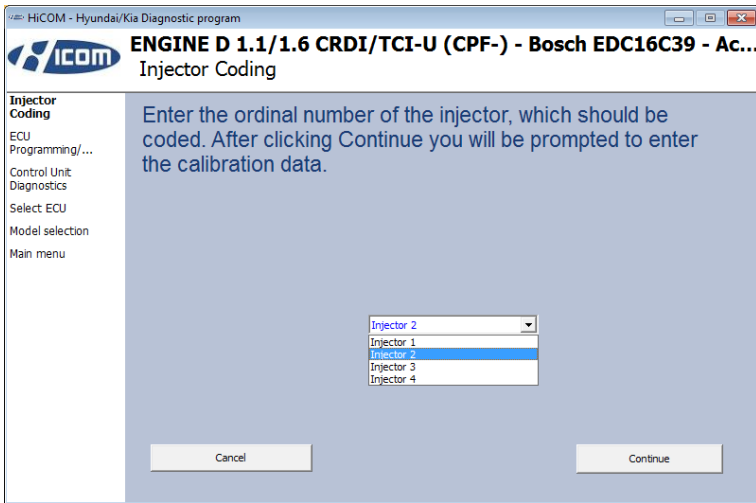


Current injector configuration can be read using „Read CRDi injectors calibration function“. This function is safe to use, it does not change any values.

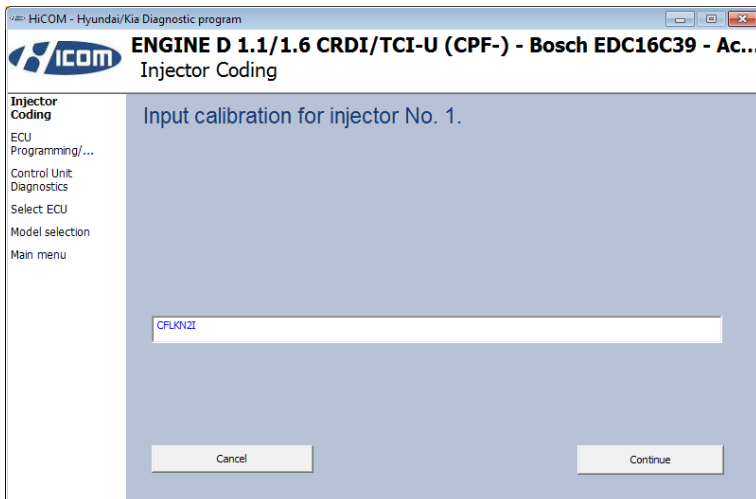
Should match data on the injectors installed in vehicle.

We recommend reading and storing original values before coding new injectors.





Injectors are coded one-by-one. First you are asked for number of injector (1..4 for 4-cylinder engine, 1..5 for 5-cylinder, 1..6 for 6-cylinder) or to re-code.



Then enter correct 7-digit calibration number.

Verify successful operation by reading back injectors calibration.